



## Rabbit anti Ubiquited H2A Polyclonal Antibody

Alternative Name(s): ubiquited H2A

### Order Information

- **Description:** H2A(Ubiquited K119)
- **Catalogue:** 602-820
- **Lot:** See label
- **Size:** 100ug/200ul
- **Host:** Rabbit
- **Clone:** nan
- **Application:** WB, IP, IF
- **Reactivity:** Hu, Ms, Rt

### ANTIGEN PREPARATION

A synthetic peptide AVLLP-K-KTESHKK (K119) at an ubiquited K119

### BACKGROUND

Histones are basic nuclear proteins that together with DNA make up the nucleosome structure in eukaryotes. Nucleosomes consist of approximately 146 bp of DNA wrapped around a histone octamer composed of pairs of each of the four core histones (H2A, H2B, H3, and H4). Histone H1 and the N-terminal tail of H3 have key roles in the folding and inter-association of the chromatin fiber. Histone ubiquitination has been correlated with DNA repair and transcription, cellular differentiation, cell cycle regulation, spermatogenesis, protein trafficking, and response to stress. Histone H2A is monoubiquitinated at Lys119 by the PRC-1L complex (Polycomb repressive complex 1-like), which includes Ring1, Ring2, Bmi1 and HPH2. Ubiquitinated H2A normally represents about 15% of H2A, but this value can be as high as 50% in active chromatin. Ubiquitinated histone H2A has also been associated with transcriptional silencing of large chromatin regions and linked to Polycomb silencing so the function of ubiquitinated H2A remains undefined.

### PURIFICATION

The Rabbit IgG is purified by Epitope Affinity Purification

### FORMULATION

This affinity purified antibody is supplied in sterile Phosphatebuffered saline (pH7.2) containing antibody stabilizer

### SPECIFICITY

This antibody only recognizes ~ 28 kDa of ubiquited K119 of H2A protein.

### STORAGE

The antibodies are stable for 24 months from date of receipt when stored at -20oC to -70oC. The antibodies can be stored at 2oC-8oC for three month without detectable loss of activity. Avoid repeated freezing-thawing cycles.

### APPLICATIONS/SUGGESTED WORKING DILUTIONS\*

- Western Blot: 0.1-1 µg/ml
- ELISA: 0.01-0.1 µg/ml
- Immunoprecipitation: 2-5 µg/ml
- IHC: 2-10 µg/ml
- Flow cytometry: Not tested
- Molecular Weight: 27.9
- Positive Control: Kidney Tissue
- Cellular Location: Cell Membrane

\*Optimal dilutions should be determined by researchers for the specific applications.

### FOR RESEARCH USE ONLY.

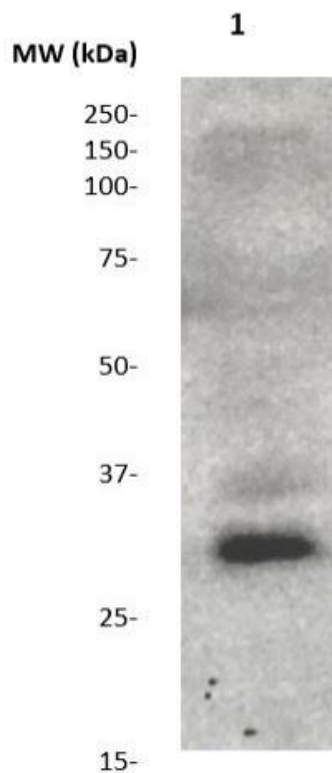
AbboMax, Inc 2528 Qume Drive, Suite 8, San Jose, California 95131, USA  
1 408-573-1898 (Tel). 1 408-573-1858 (Fax). [www.abbomax.com](http://www.abbomax.com) [info@abbomax.com](mailto:info@abbomax.com)



**FOR RESEARCH USE ONLY.**

AbboMax, Inc 2528 Qume Drive, Suite 8, San Jose, California 95131, USA  
1 408-573-1898 (Tel). 1 408-573-1858 (Fax). [www.abbomax.com](http://www.abbomax.com) [info@abbomax.com](mailto:info@abbomax.com)

## DATA ATTACHMENTS



Western Blot: The Cell nuclear extract derived from Hela cells was resolved onto 12% SDS-PAGE, transferred onto NC membrane, and immuno-blotted by Rb anti Histone H3(ubiquited) (Cat#602-820) at 1:500. An immunoreactive band around ~17 kDa was observed.

## REFERENCES

### FOR RESEARCH USE ONLY.

AbboMax, Inc 2528 Qume Drive, Suite 8, San Jose, California 95131, USA  
1 408-573-1898 (Tel). 1 408-573-1858 (Fax). [www.abbomax.com](http://www.abbomax.com) [info@abbomax.com](mailto:info@abbomax.com)